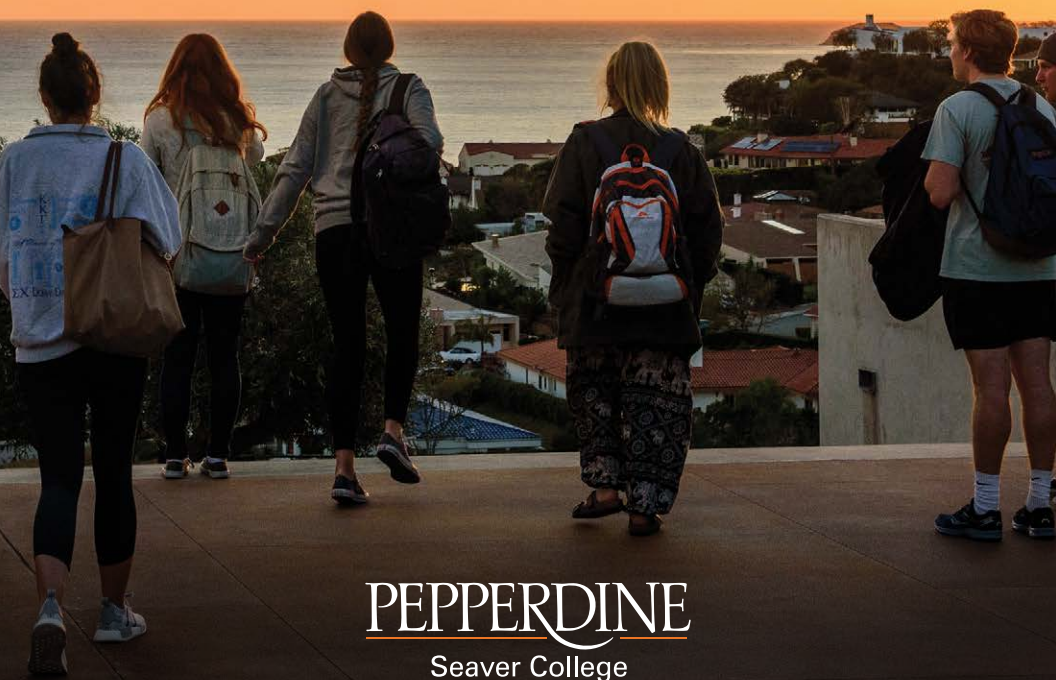




Parent  
& Family

# GUIDE

2019–2020



PEPPERDINE  
Seaver College

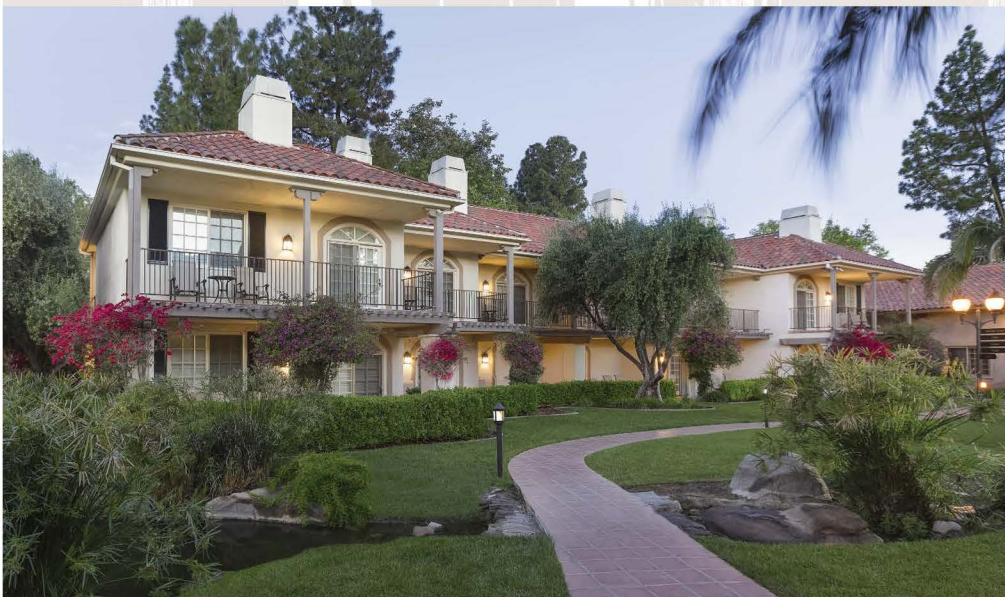


# WESTLAKE VILLAGE INN

HOTEL | RESTAURANT | LOUNGE | WINERY

©CACHET

*Proudly Supports Pepperdine*



Styled after a private estate and situated on 17 acres of gardens, vineyards & a private lake our boutique hotel excused a blend of warmth, charm & luxury. Preferred rates available for Pepperdine family and faculty.

For reservations, please call  
(818) 889-0230 or visit [westlakevillageinn.com](http://westlakevillageinn.com)



connect with us @westlakevillageinn

STONEHAUS mediterraneo BOGIES

31943 Agoura Road | Westlake Village, CA | 91361 | [westlakevillageinn.com](http://westlakevillageinn.com) | 818.889.0230

PEPPERDINE UNIVERSITY BOOKSTORE  
*the best place for...*

## BOOKS

rental, new,  
used, digital

## GEAR

head to  
toe Pepperdine

## LIFE

gifts, snacks,  
and supplies



**THE BEST PLACE TO MAKE WAVES!**

## PEPPERDINE UNIVERSITY BOOKSTORE

Tyler Campus Center  
310-506-4291 | [PepperdineShop.com](http://PepperdineShop.com)





## About this Guide

CollegiateParent has published this guide in partnership with Pepperdine University. Our goal is to share helpful, timely information about your student's college experience and to connect you to relevant campus and community resources.

Please refer to the school's website and contact information below for updates to information in the guide or with questions about its contents. CollegiateParent is not responsible for omissions or errors. This publication was made possible by the businesses and professionals contained within it. The presence of university/college logos and marks in the guide does not mean that the publisher or school endorses the products or services offered by the advertisers.

©2019 CollegiateParent. All rights reserved.

### CollegiateParent

3180 Sterling Circle, Suite 200  
Boulder, CO 80301

**Advertising Inquiries:** (866) 721-1357  
[www.CollegiateParent.com/advertisers](http://www.CollegiateParent.com/advertisers)

Design by Kade O'Connor



## PEPPERDINE

### Seaver College

**For more information, please contact**

**Pepperdine University**  
Seaver College Parents Program  
24255 Pacific Coast Highway  
TAC 323  
Malibu, CA 90263  
(310) 506-4617

# Table of CONTENTS

- 06 | Welcome to Pepperdine
- 08 | The Mission of the Parents Program
- 08 | Fast Facts about Seaver College
- 09 | What Parents Need to Know about FERPA
- 10 | Student Accounts
- 12 | Advice for Parents
- 14 | Campus Living
- 16 | Campus Map
- 19 | Health Center
- 20 | Career Services
- 21 | Campus Safety
- 22 | Student Accessibility
- 23 | Get Involved in the Seaver Parent Council
- 25 | Be Part of the Team
- 26 | Wave Lingo
- 28 | Important Phone Numbers
- 29 | Academic Calendar

# WELCOME *to* PEPPERDINE



**When you and your student chose Pepperdine, your entire family became part of our family! You are valued members of our community — friends who are important to us and partners who will join us in our mission of preparing students for lives of purpose, service, and leadership.**

Our goal is that you AND your student will take from this place experiences, memories, and lessons that will remain with you for a lifetime. As such, we seek to find ways to connect you to us while your student is here and keep you connected in the years to come. The Parents Program office and the Seaver Parents Association are the two ways we establish and maintain that connection.

Composed of parents, grandparents, and guardians of current and graduated Seaver college students, the Parents Association is dedicated to providing a range of opportunities for families to interact with Seaver students, with the university community, and with each other. Events are designed to strengthen communication with parents, promote parent participation, and to support your student's university experience. There is no cost to be a member.

The Parents Program office not only welcomes each new family with information during summer send-off parties and New Student Orientation, but we also host several events a year, including a Reception with the Dean and a grandparents' reception at our fall family weekend, Waves Weekend. Additionally, we provide monthly email newsletters to parents, grandparents, and other family members and

host a Parents Program website. Be sure to check out all the links on the Pepperdine Parents Program website at [seaver.pepperdine.edu/parents](http://seaver.pepperdine.edu/parents). There's so much valuable information housed there. Before orientation you might want to visit the "Around Malibu" page. Be sure to follow "Pepperdine Parents Program" on social media — Facebook, LinkedIn, and Instagram.

We appreciate your involvement in your student's college experience and look forward to spending time with you. The Parents Program office is located on the third floor of the Thornton Administrative Center. We would love for you to stop by and visit us when you are in Malibu. If you have any questions, we are available at our dedicated Parents Program line at (310) 506-4617.

We pray that your entire family will be blessed by your shared experience at Pepperdine.

**We look forward to hearing from you soon,**

**Christine Galvin, *Manager*  
Parents/Supporters Program**



# The **MISSION** of **THE PARENTS** **PROGRAM**

Pepperdine University actively partners and communicates with parents, supporters, and family members of current and graduated Seaver College students to support the overall academic success and personal development of the student body, while also assisting families to become appropriately engaged with the Pepperdine community through service, support, sponsorship, and spiritual life formation.

## Our mission is:

- To serve as a resource for parent volunteers, hosts, and ambassadors
- To encourage and promote parents' support for the Pepperdine Fund and other funding opportunities
- To encourage parents to sponsor students into their places of employment
- To further enhance the spiritual life formation of the student through the integration of faith and learning within a framework of Christian values and beliefs

## **FAST FACTS** *about* **Seaver College**

**Dean:** Michael Feltner, PhD

**How many applications did Seaver College receive?** For fall 2019, Pepperdine received 12,134 applications.

**How competitive was admission this year?** This year's pool of admitted students continues to be selective. Only 35 percent of applicants were admitted this year. For this incoming class, the average SAT is 1340, ACT is 30, and the GPA is 3.79.

**Enrollment stats:** 954 total new students: 40% male, 60% female

**Student/faculty ratio:** 13:1

**School Team Name:** Waves

**School colors:** Blue and Orange

**Athletic mascot:** Willie the Wave

**Number of NCAA Division I teams:** 16

**Motto:**  
*"Freely ye received,  
freely give"*  
*(Matthew 10:8)*

# *What Parents Need to Know* **ABOUT FERPA**



## **The Family Educational Rights and Privacy Act (FERPA) of 1974 is a federal law that protects the rights of students by defining who has access to student educational records.**

Now that your student is in college, FERPA laws transfer ownership of the educational records directly to the student; therefore, parents have no inherent rights to view, change, or control the student's educational records.

In general, unless your student gives you access to her/his academic and/or financial records, we will not be able to share any related information with you. Academic records include registration, schedule, and grades. The student account is a detailed record of all costs of attendance, miscellaneous charges, and related financial assistance. Students and those to whom they have granted access will be able to view, pay,

and update student account information online through WaveNet's Student Center.

Please ask your student to grant you guest access to her/his account! This is the only way that you will be able to access your student's information including account balance, payments, refunds, financial assistance, and/or grades. Your student may designate you as a guest user and will determine your level of access. We encourage you to speak directly to your student about this service.

For more information please contact the Office of Student Information and Services (also known as "OneStop") at (310) 506-7999.





# STUDENT *Accounts*

**The online student account serves as the official student “bill.” The account will be updated automatically with every charge or credit posted to the student account.**

The amount due will be available by viewing the student account online through WaveNet and will reflect the charges, credits, amounts due, and specific due dates for each.

Students are responsible for viewing their student account online, noting the account balances due, and making the appropriate arrangements for payment to be received by the due date. If you as a parent wish to receive email notifications regarding the account activity, please have your student grant you guest access to his or her WaveNet account and sign you up for “billing reminder emails.” You may also ask your student to grant you access to “Account Detail” so that if you have any questions and wish to contact Student Accounts, we will be able to discuss the account with you.

Payment options, due dates, FAQs, and contact information can be found at [seaver.pepperdine.edu/studentaccounts](http://seaver.pepperdine.edu/studentaccounts).



## Financial Assistance

**At Pepperdine, financial assistance is awarded to approximately 75-80 percent of our students. Our financial assistance includes scholarships, grants, loans, and on-campus employment opportunities. Our financial assistance staff is happy to assist you.**

**Phone: (310) 506-4301  
Email: [finaid2@pepperdine.edu](mailto:finaid2@pepperdine.edu)  
FAFSA Code: 001264**

**Our University  
Checking account  
is loaded with  
amazing features.**



- You're covered from coast to coast with 30,000 surcharge-free CO-OP ATMs and 5,000+ Shared Branches
- Automatic ATM fee reimbursements up to \$25 monthly<sup>1</sup>
- The potential to earn up to 5.00% APY<sup>2</sup> when you have your loans with University Credit Union

**Become a member today!**

**Bank with your brain. ■ [ucu.org](http://ucu.org) ■ 800.UCU.4510**

<sup>1</sup>Up to \$25 in ATM fees incurred at other financial institutions will be automatically credited to your active University Checking account at close of month end.

<sup>2</sup>APY = Annual Percentage Yield. Based on a combined rate of 4.88% and an active University Checking account. APY may change after the account is opened. Dividend declaration date 10/9/2018. Limited to balances up to \$5,000. Multiple loans in the same category count for only 1.00% APY dividends. Credit card must be active, have at least one monthly transaction (excludes balance transfers and cash advances), and be enrolled in credit card eStatements to qualify for the extra 1.00% APY dividend. Account does not earn dividends if there is a \$0 balance in a HELOC at the end of the month. All accounts must be in good standing with no delinquency or bankruptcy pending. Secondary Checking accounts not eligible and will be paid at the regular checking rate (if applicable). Dividends are subject to change at any time. Fees may reduce earnings on account. To establish a membership, you must deposit at least \$5 to a Regular (Share) Savings Account. All accounts subject to UCU approval. Not valid with any other offers.





# ADVICE *for* PARENTS



**The first year at Pepperdine will be an exciting, challenging, and transforming experience for both you and your student. Parents play a critical role in student adjustment, so it is important to be equipped with helpful advice and strategies you can use to support them.**

Homesickness is the most common challenge during the first year. Students indicate that it helps if family members keep in close contact by phone, email, and sending care packages and letters. Another area of adjustment is having a roommate and all aspects of sharing the space — especially if the student is accustomed to having his/her own room. Students recommend that new students wait a couple months before going home for the first time, citing Thanksgiving to be a good goal because it is important to connect with the Pepperdine community. Finally, going home again can be challenging because everyone has changed — the student, the family, friends, as well as the community.

Encourage your student to get involved in extracurricular activities to help them develop leadership and social skills valued by future employers. Listen with an open mind to your

student's concerns. The academic pace can be an adjustment and may be overwhelming at first. Although it is important to offer your student advice, college is a time for your student to grow, so it is also necessary to allow your student to make their own choices.

## Car or no car?

The answer to this question is not easy. Although it is easier to have a car, especially if your student is used to having one, there are ways to get rides with other students. If a student does not have a car, they are more likely to become more connected to the Pepperdine University community — especially if you live in Southern California and think they will come home often. Parking is very tight, but it is free. Students are also able to rent cars by the hour by contacting our Public Safety department.

## Finances

The amount of spending money needed varies between students. There are many things to do on campus or in the Los Angeles area that do not cost additional money. Frequent expenses include: recreational activities, occasional meals out, Greek organizations that require membership dues ranging from \$500–\$1000 each semester, and other campus events.

## Study Abroad

Pepperdine University's nationally ranked study abroad office operates seven campuses throughout the world.

Studying abroad is a Seaver College highlight and tradition. The Institute of International Education ranked Pepperdine in the top three in the nation for highest percentage of students who studied abroad from 2016–2019. Two out of three Seaver College students study abroad at least once during their undergraduate career.

Students apply in September of their freshman year for the opportunity to study abroad their sophomore year. In addition to sophomore fall and spring programs, International Programs (IP) offers summer internship, general education, and language programs at our seven global campus sites. Lastly, IP's summer faculty-led programs take students on academic adventures to places like Fiji, Scotland, Jordan, and Kenya. Depending on the program and year, the admissions process can be very competitive. We encourage you to talk to your student about studying abroad prior to their first day at Pepperdine. For more information on the international programs offered at Pepperdine, visit [community.pepperdine.edu/seaver/international-programs](http://community.pepperdine.edu/seaver/international-programs).

301  
OCEAN

301 OCEAN AVENUE APARTMENTS  
OCEAN VIEW LIVING  
WALK TO THE BEACH!

Modern Luxury Ocean View apartments now leasing  
--perfect for students or visiting parents.  
38 exclusive apartments for rent at Ocean Avenue and San Vicente  
Studio, 1 bedroom, 2 bedroom apartments and 2 bedroom townhomes.  
Private Ocean View terraces and Private rooftop decks.



- 24 Hour Concierge/Security
- Gym and Yoga Studio
- Private Courtyard
- Business Conference Room
- BBQ, pet friendly.
- Enjoy Palisades Park!

Like us on:

301 Ocean Apartments – Santa Monica, CA @301OceanApartments

301oceanapartments

Visit us at [301ocean.com](http://301ocean.com) View by appointment 310.907.7587



# CAMPUS *Living*



## CAMPUS HOUSING

Our mission is to establish a community that fosters social, academic, and spiritual growth.

As a result, all new first-year students are required to live on campus and have a meal plan for four semesters. New transfer students are required to live on campus for the entire academic year. The only exception applies to spring transfer students who are required to live on campus for one semester (the spring term when they begin Pepperdine).

We believe the relationships and community built during these first years of attending Pepperdine are vital to the college experience. The Housing and Residence Life program (HRL) provides an atmosphere that empowers students to make connections between faith, living, and learning within a diverse community.

Read more about the University's residency requirement policy in our Student Policies at [pepperdine.edu/student-policies](http://pepperdine.edu/student-policies).

## Housing Portal

Students apply for housing at Pepperdine using our online housing portal. This system provides them the opportunity to apply for campus housing, search for and select roommates, manage their meal plans, and view their room assignments. Admitted students should check their Pepperdine email accounts regularly during the summer for information on when the housing portal will open to them and important deadlines.

Learn more about joining our residential Community at [community.pepperdine.edu/housing](http://community.pepperdine.edu/housing).

## Seaver College Housing

Learn more about our living areas and frequently asked questions including when to check in, when to check out, shipping instructions, and what students should and should not bring when they join our residential community at [community.pepperdine.edu/dorm-life-faq](http://community.pepperdine.edu/dorm-life-faq).

## Ideas of What to Bring

- Sheets (extra-long twin) and mattress pad (extra-long twin)
- Comforter and pillow
- Toiletries and caddy (personal items should not be stored in the bathroom)
- Towels
- Shower shoes/flip flops
- Storage containers
- Lots of hangers
- Laundry basket and iron/ironing board
- Trashcan
- Bulletin board and/or white board
- Decorative items to personalize the room
- Computer
- Good lighting — at least two lamps (no halogen bulbs or string lights)
- No Coaxial Cable is needed as Direct TV is now available in the common areas.
- Two UL approved surge protectors with lots of outlets (including some wide outlets for chargers)
- A ½-inch socket wrench for move in if you want to raise the height of the bed. Otherwise, you can call Housing to do this for you. If you want to bunk your beds (no lofting), the Housing Office will provide pegs and instructions.
- A small fan
- Good walking shoes and comfortable flip-flops for running around campus (only a few bring bikes — it's too hilly)
- Cocktail attire or Sunday best clothing for President Benton's reception during orientation; additional suits and party dresses may be in order if your student decides to pledge a sorority or fraternity.

*Note: Target, Home Goods, and Bed Bath & Beyond are all located within 30 minutes of campus. Mini fridge and microwave combination units called MicroChills will be available to rent for the year from College Products, (712) 948-3250. ➤*

# DISCOVER US



- \$10 student tickets for all shows
- Student employment opportunities
- Diversity of artists and performances
- Training from arts professionals

LISA SMITH WENGLER  
CENTER FOR THE  
**arts**  
PEPPERDINE

[arts.pepperdine.edu](http://arts.pepperdine.edu)

310.506.4522



@PepperdineCFA





# CAMPUS MAP

## PEPPERDINE SEAVER COLLEGE

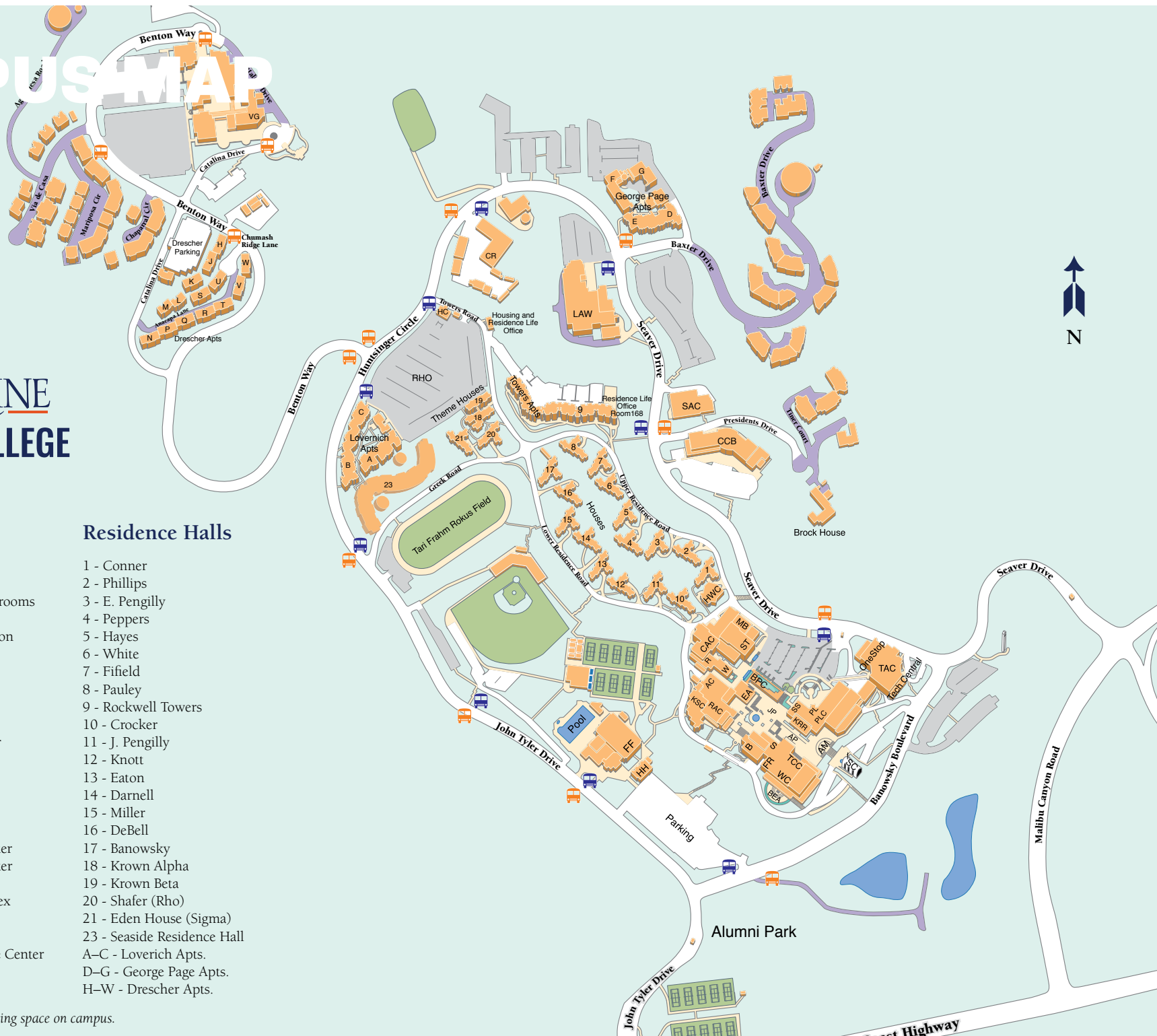
### Campus Buildings

AC	Appleby Center
AM	Amphitheatre
AP	Adamson Plaza
BEA	Beaman Patio
BPC	Black Family Plaza Classrooms
CAC	Cultural Arts Center
CCB	Center for Communication and Business
CR	Central Receiving
EA	Elkins Auditorium
FF	Firestone Fieldhouse
HC	Health Center
HWC	Howard A. White Center
JC	Juarez Courtyard
JP	Joslyn Plaza
KSC	Keck Science Center
MB	Music Building
PL	Payson Library
PLC	Pendleton Learning Center
RAC	Rockwell Academic Center
RHO	Rho Parking Lot
SAC	Seaver Academic Complex
SC	Stauffer Chapel
ST	Smothers Theatre
TAC	Thornton Administrative Center
TCC	Tyler Campus Center
VG	Villa Graziadio

### Residence Halls

1 - Conner
2 - Phillips
3 - E. Pengilly
4 - Peppers
5 - Hayes
6 - White
7 - Fifield
8 - Pauley
9 - Rockwell Towers
10 - Crocker
11 - J. Pengilly
12 - Knott
13 - Eaton
14 - Darnell
15 - Miller
16 - DeBell
17 - Banowsky
18 - Krown Alpha
19 - Krown Beta
20 - Shafer (Rho)
21 - Eden House (Sigma)
23 - Seaside Residence Hall
A-C - Loverich Apts.
D-G - George Page Apts.
H-W - Drescher Apts.

Visitors may park in any legal parking space on campus.





## Pepperdine Residence Hall Room and Furniture Dimensions

Wondering if that perfect container for your student's laundry supplies will fit on the closet shelf? Will the wireless keyboard fit in the top desk drawer? Will those cool drawers or containers fit under the bed? Then this is the link for you: [community.pepperdine.edu/dorm-room-faq](http://community.pepperdine.edu/dorm-room-faq).

For more information and questions, please email [housing@pepperdine.edu](mailto:housing@pepperdine.edu) or call (310) 506-7586.

## CAMPUS DINING

The Waves Café is one of our three main dining facilities located on the first floor of the TCC (Tyler Campus Center). This state-of-the-art platform dining concept features restaurant-quality food. A beautiful 180-degree ocean view also gives this location a very special appeal. The Waves Café features four entree stations serving a different freshly prepared item at each meal, an extensive salad bar, and gourmet soups and desserts. Vegan or vegetarian items are offered for lunch and dinner, in addition to bakery items and a pizza bar.



In addition to Wave's Café, we have Nature's Edge, Jamba Juice, HAWC Café, and Oasis (our new artisan pizzeria and noodle bar). There is also Starbucks Coffee in the Payson Library. Meal plans can be purchased in a variety of ways.

To learn more, go to [community.pepperdine.edu/mealplans](http://community.pepperdine.edu/mealplans).

## CAMPUS ACTIVITIES

### Student Organizations

Students have an opportunity to cultivate community spirit, serve Pepperdine and surrounding communities, and grow. Check out our Student Government Association, Inter-Club Council, Sports Club Council, Greek life, and more.

### Student Clubs

Using "The Peppervine," students can explore hundreds of Seaver College's student clubs and organizations, ranging from the on-campus radio station and our student veterans group to the Genesis Gospel Choir.

For more information, go to [seaver.pepperdine.edu/student-life/campus/activities](http://seaver.pepperdine.edu/student-life/campus/activities).

# HEALTH Center



**The Student Health Center (SHC) is conveniently located on campus for easy access and serves all enrolled students.**

The staff, consisting of board-certified medical doctors, a nurse practitioner, nursing staff, and a registered dietician, is dedicated to the health and wellness of our student population. They are skilled in working with this age population and provide a professional and inviting atmosphere for students who seek care. The health center emphasizes preventative care and health education during patient visits and outreach programming. Services are efficient, timely, and cost effective. Front office staff provides paperwork at the conclusion of appointments for students to seek reimbursement from their insurance carriers.

For more information, visit their website, [community.pepperdine.edu/healthcenter](http://community.pepperdine.edu/healthcenter).

### Student Health Insurance

Pepperdine University requires all students both domestic and international, including those studying abroad, to carry a U.S.-based health insurance plan. To meet this requirement, students may either:

1. Provide proof of a U.S.-based health insurance plan through the online waiver system during the posted submission dates through this website: [studentinsurance.usi.com/Pep/pepperdine](http://studentinsurance.usi.com/Pep/pepperdine) OR
2. Be enrolled in the Student Health Insurance Plan (SHIP)

Any policy that has comparable coverage to SHIP will meet the health insurance plan requirement. In order to waive out of the SHIP option, students must submit proof of comparable insurance through the online waiver system by the posted deadline dates each academic year. Our insurance broker, USI Insurance Services, facilitates our Student Health Insurance Plan and the online waiver site. For questions regarding SHIP, the online waiver, or submission dates and deadlines, please call USI Insurance services at (800) 853-5899 or visit the health insurance website at [community.pepperdine.edu/healthcenter/insurance](http://community.pepperdine.edu/healthcenter/insurance).

### Student Counseling

The Counseling Center provides free, confidential services for Pepperdine students, including individual, couples, and group counseling; walk-in consultations; and psycho-educational outreach programming. Students come to the Counseling Center for a variety of concerns including homesickness, depression, anxiety, relationship problems, eating concerns, and addictive behaviors. The Center also offers psychological consultation to students, faculty, staff, or parents who are concerned about a student. A caring, licensed professional staff member is here to meet your needs.

Learn more about our services by exploring our website at [pepperdine.edu/counselingcenter](http://pepperdine.edu/counselingcenter) or call (310) 506-4210.



310-317-1229

## SURF CAMPS SURF LESSONS SPECIAL EVENTS

TEACHING SURFING AT PEPPERDINE FOR 20 YEARS!

**MALIBUMAKOS.COM**



# CAREER *Services*

## Career Center

The Career Center is committed to assisting students with career exploration and planning while also helping them build meaningful professional experience in school and after graduation. Students can take charge of their careers early by taking a first-year career course, using the AI resume review tool, or participating in job shadow days and company tours. These activities help them refine their sense of self and set career goals. Moreover, students can sharpen skills like resume writing, interviewing, and networking which are needed to land internships and other professional experiences.

*Encourage your student to get involved in extracurricular activities to help them develop leadership and social skills valued by future employers.*

Industry specialists provide tailored coaching support for students seeking internships, jobs, or graduate school admission. Students can access numerous opportunities through Handshake and connect with alumni, industry groups, or mentors through PeppConnect, Pepperdine's online alumni network. Special offerings like career fairs, networking events, the Career Coaching Program, and Pepperdine Career Week help students prepare for the world of work and gain the confidence employers recognize.

For more information on the Career Center, go to [seaver.pepperdine.edu/career-services](http://seaver.pepperdine.edu/career-services). For more information on PeppConnect, visit [peppconnect.org](http://peppconnect.org).

## Student Employment

The Student Employment Office offers services to students, including on- and off-campus job listings, community service job opportunities, and summer employment opportunities. The University offers positions in research, recreation, clerical support, telecommunications, computer technology, and other fields of interest. Participating students must comply with university personnel policies and procedures. Students eligible for Federal Work Study may work on campus, but are also encouraged to participate in the Community Service Program, which offers opportunities in education, health care, social work, law enforcement, and government. Off-campus opportunities are available in childcare, private tutoring, retail, and office management.

For more information on Student Employment go to [pepperdine.edu/student-employment](http://pepperdine.edu/student-employment) or call (310) 506-4177.

## Student Activities

For a complete list of student activities please go to: [seaver.pepperdine.edu/studentactivities](http://seaver.pepperdine.edu/studentactivities).



**The Department of Public Safety is committed to providing and maintaining a safe and secure environment while respecting the rights and dignity of individuals utilizing programs and facilities of Pepperdine University.**

Specific services include — but are not limited to — 24-hours-a-day, seven-days-a-week security patrols, emergency response, threat assessment, building security, parking/traffic enforcement, campus safety escorts, dignitary protection, and dissemination of safety-related information.

Other services include the Student Safety Escort Program, entry into vehicle with keys locked inside, jumpstart vehicle with a dead battery, and the Safe Ride Program.

We also encourage your son or daughter to download the Live Safe app from iTunes or the Google Play store. This app offers users a variety of campus safety resources as well as the ability to communicate directly with DPS and 911, if needed. This app allows your student to report concerns anonymously.

## Safe Rides

Pepperdine's Safe Rides program exists to provide a safer community. If a student does not feel safe in an off-campus location, regardless of the circumstances, they are encouraged to call Public Safety for assistance at (310) 506-4441.

We will facilitate your student's safe return to campus by utilizing the appropriate resources. This is not a confidential service, but students should not fear punishment for seeking assistance when in an unsafe situation.

For more information, go to [pepperdine.edu/publicsafety](http://pepperdine.edu/publicsafety) or call (310) 506-4700.

## TOWNEPLACE SUITES®

MARRIOTT

CLOSE TO PEPPERDINE UNIVERSITY

**12% OFF RETAIL**  
for Pepperdine Parents



Voted by TripAdvisor guests as a Certificate of Excellence award winner in Thousand Oaks, CA. Our newly renovated TownePlace Suites in Thousand Oaks offers perfect amenities for leisure travelers. The TownePlace Suites by Marriott Thousand Oaks, California hotel is located off US-101 with easy access to Burbank Bob Hope and Los Angeles International Airport. Our extended stay hotel is also within driving distance to Malibu and Ventura Beaches, Santa Monica Mountain Trail and Conejo Valley Wine Trail. TownePlace Suites by Marriott is a Thousand Oaks extended stay all-suite hotel with fully equipped kitchen, complimentary hot breakfast, wireless internet and parking. Our Thousand Oaks hotel ensures a memorable stay!



1712 Newbury Road, Thousand Oaks, CA 91320 • [www.marriott.com/oxrts](http://www.marriott.com/oxrts)



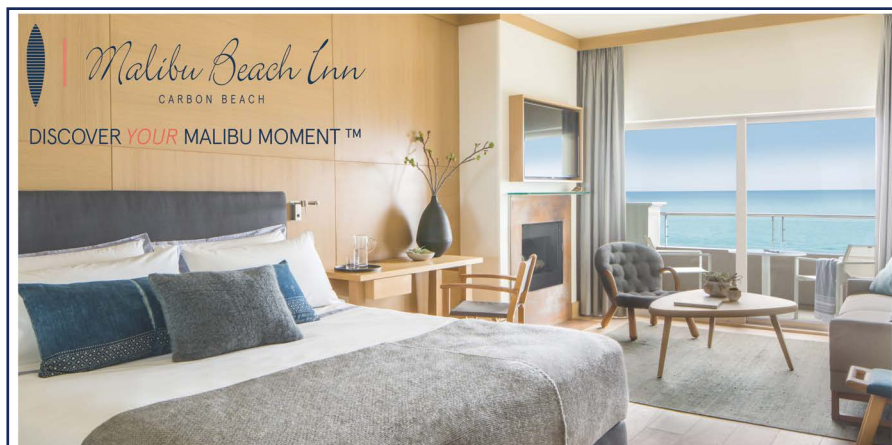


# STUDENT Accessibility

**The Office of Student Accessibility (OSA) supports students with accessibility needs in all aspects of their Pepperdine experience.**

The University provides services and accommodations as mandated by the ADA and section 504 of the Rehabilitation Act. Registering with the office is an interactive process, based on the student narrative and supporting documentation. Because each disability and the particular circumstance is unique, we encourage all students with disabilities to contact the OSA to talk about specific needs.

To learn more, please visit [pepperdine.edu/student-accessibility](http://pepperdine.edu/student-accessibility) or call (310) 506-6500.



1.800.4.MALIBU  
MALIBUBEACHINN.COM

22878 PACIFIC COAST HIGHWAY  
MALIBU CA 90265



A MEMBER OF  
**THE LEADING HOTELS  
OF THE WORLD®**



## Get Involved in the SEAVER Parent Council

**There are many opportunities to become involved in the Seaver Parent Council through its various committees: Annual Fund, Ambassador, Career Center, Fine Arts, Outreach, and Spiritual Life.**

The **Adopt-a-Dorm Committee** will enhance first-year and transfer students' living and learning experiences both inside and outside the residence halls. The committee helps the HRL staff to better meet the physical, spiritual, and emotional needs of students.

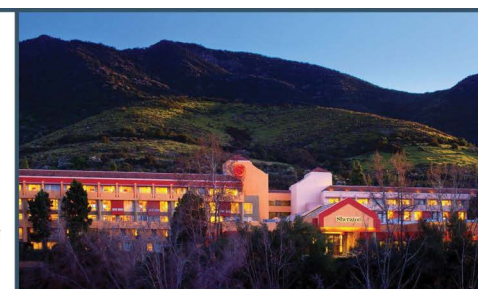
The **Annual Fund Committee** identifies ways that parents can support the Annual Fund by assisting with the annual Wave Classic Golf Tournament, recruiting and introducing potential Pepperdine Associate members to the University, and identifying fundraising project goals to benefit students and the Parents Association activities.

The **Ambassadors Committee**, composed of families of current and past Seaver College students, volunteers as hosts and greeters at on-campus events such as Waves Weekend and the Malibu Admission Reception, as well as calls new parents and answers any questions they may have.

The **Career Center Committee** assists the Seaver College Career Center by identifying parents to serve as a career coaches and mentors, speak about a company or industry, or provide internships, informational interviews, job listings, or company tours. ➤



**Just a short drive from campus.  
Enjoy an exclusive discount for  
Pepperdine Students, Family and  
Faculty along with Complimentary  
Wi-Fi and Self Parking.**



For reservations, please call 818-707-1220 or visit [Marriott.com](http://Marriott.com)  
30100 Agoura Road, Agoura Hills, CA 91301

The **Fine Arts Committee** supports the efforts of the Division by assisting with meals for load-in and -out days, attending fundraising events, supporting students and faculty with travel abroad opportunities (Edinburgh for Theatre and Prague for Choir), and assisting with the interactions of student productions and the Parents Program such as Fall Musical, Dance in Flight, and Songfest.

The **Outreach Committee** serves as the outreach to current, prospective, and incoming students and their parents. Committee activities include volunteering at the annual fall information sessions and spring admission receptions in their city, as well as offering testimonials regarding their experiences as Pepperdine parents, hosting send-off parties or events in their city, and serving as a resource to the Pepperdine Admission Office in speaking with prospective students and their families.

The **Spiritual Life Committee** further enhances the spiritual life formation of the student through assisting in the bi-annual prayer walks, supporting the Veritas Forum and the Center for Faith and Learning initiatives, hosting MOPS (Moms of Pepperdine Students) gatherings, supporting PPP (Pepperdine Parents in Prayer), and committing to daily prayer for the needs of the University.

The **Seaver Grandparents Program** welcomes grandparents as part of the Waves family. Please join the Parent Council and plan on attending Waves Weekend. We have some unique ideas for you to interact with your grandchild and Pepperdine throughout the year.

## Giving Back

When you choose to support Seaver College, you can rest assured that your gift will be used for the betterment of the Pepperdine community. Your tax-deductible gift will make a difference in the lives of our students and faculty.

The members of the **Seaver Parent Associates Program** serve the University by supporting ongoing programs and activities through annual gifts of \$1000 or more.

- Their dedication and support are essential to all that Seaver College is today and will be tomorrow.
- Associates help strengthen academic programs, enhance library and technology services, attract distinguished faculty, make international study programs possible, fund student organizations, and, most importantly, provide financial aid to students.
- Students are the principal beneficiaries. Approximately 79 percent of Pepperdine students receive some form of financial aid, and full tuition pays only two-thirds of the cost of a Pepperdine education. Members of the Pepperdine Associates help prepare our students for service to society and the challenges of the future.

To learn more about the benefits of membership, please contact Kim Barkis at (310) 506-6110 or visit [seaver.pepperdine.edu/giving/associates](http://seaver.pepperdine.edu/giving/associates).



**SADA'S FLOWERS**  
— since 1927 —

10612 Culver Blvd  
Culver City, CA 90232  
310.839.2434

[www.sadasflowers.com](http://www.sadasflowers.com)



# Be Part of the Team

**If you are interested in being a part of the Seaver Parent Council, we would love to hear from you!**

**Name:** \_\_\_\_\_

**Cell Phone:** \_\_\_\_\_

**Email:** \_\_\_\_\_

**Student's Name:** \_\_\_\_\_

## I am interested in serving the:

- ☐ Adopt-a-Dorm Committee
- ☐ Ambassador Committee (Within the SoCal Area)
- ☐ Annual Fund Committee (Golf Tournament)
- ☐ Career Committee (HIRE Waves)
- ☐ Fine Arts Committee (Student Productions)
- ☐ Grandparents Program (Encourage a Wave)
- ☐ Outreach Committee (Outside the SoCal Area — Host a gathering)
- ☐ Parent Associates (Support Financially)
- ☐ Spiritual Life Enhancement Committee (Prayer Walk, Pepperdine Parents in Prayer)

## I would like to make a donation:

**Amount:** \_\_\_\_\_

**Name:** \_\_\_\_\_

☐ **Credit Card:** \_\_\_\_\_ **CVC:** \_\_\_\_\_

**Exp:** \_\_\_\_\_ **Street Address:** \_\_\_\_\_

☐ **Check Enclosed**

## Comments:

---



---



---

## Please return to:

**Seaver Parents Program**  
**Pepperdine University**  
24255 Pacific Coast Highway  
Malibu, CA 90263-4617  
**Christine Galvin, Manager**  
310-506-4617, [christine.galvin@pepperdine.edu](mailto:christine.galvin@pepperdine.edu)

**PEPPERDINE**  
Seaver College



# WAVE Lingo

## When they say... What do they mean?

### AC

Appleby Center is a building where many classes are held, near the Weisman Museum of Art. This building has two floors. When you are on the second floor, you are in the Appleby Center (AC). When you go downstairs of this building, you will be in the Rockwell Academic Center (RAC).

### Brock House

This is where the president of Pepperdine University and his family live. The house is up on the hill where the big American flag flutters. Our university president is Andrew K. Benton and his wife's name is Debby.

### CAC

Cultural Arts Center, the classroom building between the Weisman Museum and Smothers Theatre.

### CCB

Center for Communication and Business, which can be found at the top of the hill above the HAWC and Upper Residence Road. It includes classrooms and offices, and offers food services for Pepperdine's two largest majors, Communication and Business.

### Convo

Convocation, a required part of the student Pepperdine experience which offers opportunities to hear from leaders in the spiritual, educational, cultural, and political communities. There is a large Wednesday morning Convocation every week in the Fieldhouse, as well as smaller Convocations throughout the week for more specific topics.

### Dolores

Dolores is the nickname for a statue of a girl that was part of the central fountain at the original Pepperdine Campus in South Los Angeles. SEE: "The Rock."

### The HAWC

This building was named after Dr. Howard A. White, the fifth president of Pepperdine, hence the initials HAWC (C is for Center). It is a popular student hangout, open 24-hours a day during the regular school year for your student to play pool, drink coffee, and hang out. This building houses Student Activities.

### Jerry's Tree

Named after Geraldine Faries, wife of the late Judge McIntyre Faries. Both were benefactors of Pepperdine. This is a very common meeting place on campus. It is located in the main parking lot, outside the library and just above the fountain.

### Joslyn Plaza, Mullin Town Square

Here you will find Elkins Auditorium, the largest lecture hall at Seaver College. It is located outside the TCC and comprises the outdoor areas around the beautiful fountain.

### KSC

The Keck Science Center is an annex to the RAC and AC and includes classrooms, conference rooms, and laboratory teaching areas.

### OneStop

OneStop is an office dedicated to serving your student and any needs they may have. Your student can get information about financial aid, registration, student accounts, etc. as well as purchase discounted movie and amusement park tickets. OneStop is located on the second floor of TAC (same level as Joslyn Plaza).

### PLC

The Pendleton Learning Center includes classrooms that are being remodeled to be a part of the library facilities. To find it: there is a door just to the left of the library entrance that will take you there. Another entrance is by the amphitheater near the Christopher Columbus statue.

### RAC

The Rockwell Academic Center is the bottom floor of the Appleby Center (AC). The Natural Science Division is housed here.

### The Rock

This is the Malibu Campus version of Dolores. Student groups are welcome to paint the rock to show Pepperdine pride.

### SAC

The Seaver Academic Complex is a set of buildings just up the hill from the CCB where the International Studies and Languages Divisions (ISL) hold their classes.

### The Sandbar

The Sandbar is a student lounge located on the second floor of the Tyler Campus Center on the Malibu campus. This is where students pick up their mail, access university Windows and Mac computers, and enjoy a healthy smoothie from Jamba Juice.

### Seaver College

This is Pepperdine's College of Letters, Arts, and Sciences. It is one of five schools that make up Pepperdine University. The others are: Pepperdine School of Law, Graziadio School of Business Management (GSBM), Graduate School of Education and Psychology (GSEP), and School of Public Policy (SPP).

### Student Activity Center

This office is located in the HAWC on the first floor. It is home to all student activities, events, and organizations. The advisors for Student Government, Student Clubs and Organizations, and the Student Programming Board can be found here.

### TAC

The Thornton Administrative Center is next to the library and the first building you see when you enter campus on Seaver Drive. It houses many of Pepperdine's administrative offices (the President's Office, the Admission Office, Office of Financial Assistance, Parents Program, Registrar, Student Accounts, etc.). Also note that "OneStop" is located on the 2nd floor.

### TCC

Tyler Campus Center, the building that houses many of the offices and services your student will visit the most. The TCC is home to the Waves Café cafeteria (the "caf"), La Brea Bakery, Nature's Edge, Jamba Juice, the mailroom, Student Government Association, the Volunteer Center, the Career Center, Student Employment, International Programs, and the Counseling Center.

## The Pepperdine Fight Song

We're gonna fight! fight! fight!  
For Pepperdine

We're gonna win for the Orange  
and the Blue

The mountains and the sea  
inspire victory

In the Waves of Malibu.

We're gonna fight! fight! fight!  
For Pepperdine

And show our pride now for  
everyone to see

Come on and raise your voice to  
show the world your choice

And cheer our team to victory -  
VICTORY!!!

# Important PHONE NUMBERS

Malibu Campus	(310) 506-4000
Admissions	(310) 506-4392
Alumni Office	(310) 506-4348
Athletics	(310) 506-4150
Bookstore	(310) 506-4291
Campus Ministry	(310) 506-4504
Career Center	(310) 506-4184
Financial Assistance	(310) 506-4301
Health Center	(310) 506-4316
International Programs	(310) 506-4230
OneStop/Academic Advising	(310) 506-7999
Parents Program	(310) 506-4617
Public Safety	(310) 506-4700
Residential Life/Housing	(310) 506-7586
Road Conditions	(310) 506-7623
Smothers Box Office	(310) 506-4522
Student Accounts	(310) 506-8000
Student Affairs	(310) 506-4472
Tech Central	(310) 506-4811
Volunteer Center	(310) 506-4143



**Malibu Chiropractic and Wellness**  
Better Health Starts Here!

We offer 30% DISCOUNT to all students, coaches and teachers FOR ALL services...

23440 Civic Center Way, Suite 101  
Malibu, CA 90265  
chiomalibu.com  
(310) 579-5949 (CALL/TEXT)

**Voted Malibu's Best Chiropractor!**

**MALIBU CHOICE AWARDS**  
PRESENTED BY MALIBU BUSINESS JOURNAL

- Chiropractic Care
- Massage Therapy
- Acupuncture
- Sports Injuries/PT

# ACADEMIC Calendar

## FALL 2019

August 20–25	Orientation for all new students*
August 26	Classes begin
September 2	Labor Day holiday
September 7	Step Forward Day
September 25	Founder's Day Presidential Inauguration
October 4	Faculty Conference; no classes meet
October 11–13	Waves Weekend
November 27–29	Thanksgiving holiday; no classes meet
December 9 (4 Days)	Final exams** ***
December 24 (9 Days)	Winter Break; all offices closed

\* Freshmen will receive their first semester schedules during orientation. These are not impersonal, computer-generated schedules. The academic advising staff carefully look at your student's high school work, test scores, interests, AP test scores, language placement exam results, etc. and hand-pick a schedule that they feel your student can be successful with first semester. If there is a problem with the schedule, don't panic — your student can go to OneStop and request a change.

\*\* The final exam schedule for first semester is already posted online at [seaver.pepperdine.edu/academics/schedule](http://seaver.pepperdine.edu/academics/schedule). From there, choose the link "Fall 2019 Final Exam Schedule-PDF." You can also view the up-to-date 2019–2020 Academic Calendar as well as the complete Seaver class schedule from this area. Once your student knows his or her schedule you can sit down with a copy of the class schedule, the final exam schedule, and the school calendar and book flights for the holidays.

## SPRING 2020

January 9 (4 Days)	Orientation for all new students
January 13	Classes begin
January 20	Martin Luther King, Jr. Day; all offices closed; no classes meet
March 2 (5 Days)	Spring Break; no classes meet
April 27 (4 Days)	Final exams
May 2	Graduation

\*\*\* While not noted on the Academic Calendar [seaver.pepperdine.edu/academics/calendar/default.htm](http://seaver.pepperdine.edu/academics/calendar/default.htm), generally students must check out of the dorm for the Christmas holiday no later than 10 p.m. on the Thursday night of final exam week (December 12, 2019). They may check out earlier and leave once their exams are completed. If a student has a Thursday night final, they are allowed to remain in their dorms no later than 9 a.m. Friday morning (December 13, 2019). Returning residents can check back in for the spring term in the afternoon of Thursday, January 9, 2020.



**Hampton Inn & Suites Thousand Oaks**

**Book your stay today!**  
**(805) 375-0376**

When planning your trip to Pepperdine, your friends at Hampton are ready to help make your getaway fun-filled and worry free. With a great location and no extra cost from our hot Breakfast Buffet and Wireless Internet, we have everything needed for your perfect stay.

[www.thousandoakssuites.hamptoninn.com](http://www.thousandoakssuites.hamptoninn.com)  
510 North Ventu Park Road • Thousand Oaks, CA 91320





# All Guests Have a Suite Stay Ask for the Pepperdine Rate

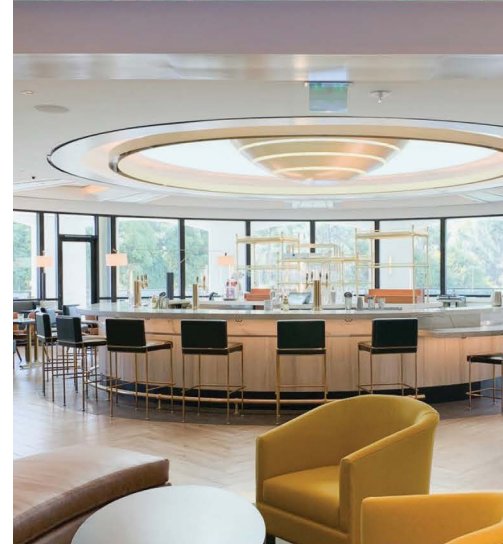
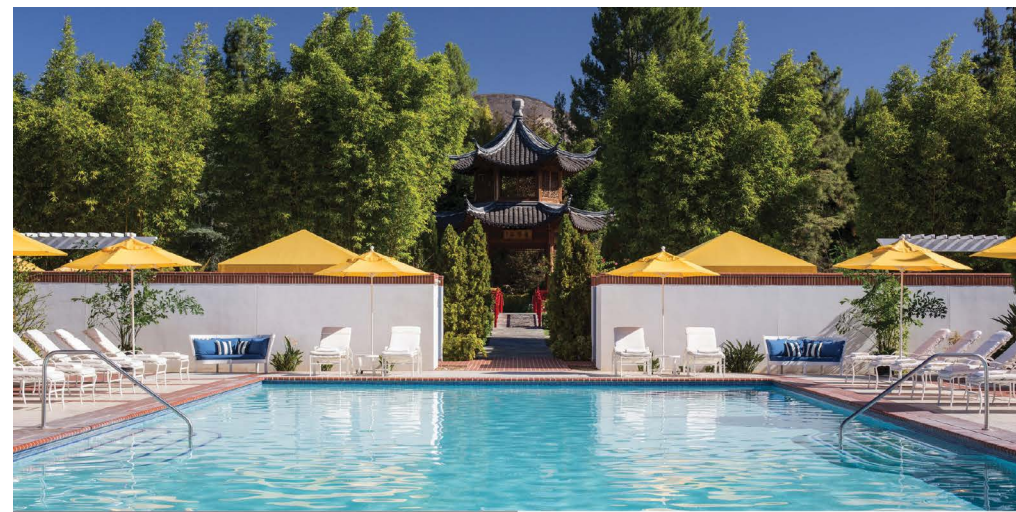


At Homewood Suites by Hilton Agoura Hills,  
We create an experience as your home away from home.  
Only 12 miles from the Pepperdine University campus  
and a direct location from the Malibu area

- Every room is a suite with a kitchen
- Free daily breakfast buffet
- Free Wi-Fi
- On-site laundry facility
- Complimentary evening social with food and drinks (Mon – Thu)
- Complimentary local shuttle service (5 mile radius)
- Outdoor, heated pool and jacuzzi
- Fitness room
- 9 hole putting green



28901 Canwood St. Agoura Hills, CA 91301 • 818-865-1000  
www.hwsagourahills.com • youu.be/V2B2IU1rpHw



Experience Southern California's  
premier destination.

Four Seasons Hotel Westlake Village  
offers an expansive 40,000 square foot spa,  
three new restaurant concepts and  
a variety of other luxurious amenities.

Located just 20 minutes from  
Pepperdine, the Five Diamond Hotel proudly  
offers special overnight rates for Pepperdine  
students, family and faculty members.

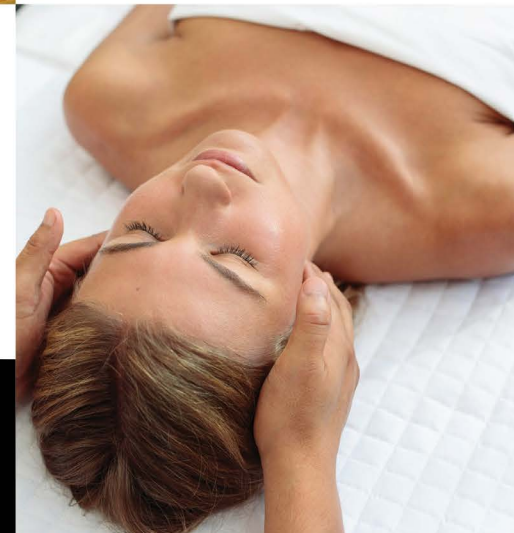
For reservations and more information,  
please call (818) 575-3000



**FOUR SEASONS**  
HOTEL  
WESTLAKE VILLAGE, CALIFORNIA

Two Dole Drive, Westlake Village  
California 91362

fourseasons.com/westlakevillage  
@fswestlake





# Calabasas Self Storage

Move-in  
Specials

NATIONAL FACILITY OF THE YEAR AWARD WINNER

## Features:

- Individual Door Alarm System
- Digital Closed Circuit Video System
- Electronic Gate Access
- Month-to-Month Rental Agreements
- No Deposit Required
- Resident Managers

Gate Access 7 days-a-week

7:00am-7:00pm

*Extended Hour Access Available*



(818) 880-6060



4200 Shadow Hills Road • Calabasas Hills, CA 91301

[www.calabasasselfstorage.net](http://www.calabasasselfstorage.net)