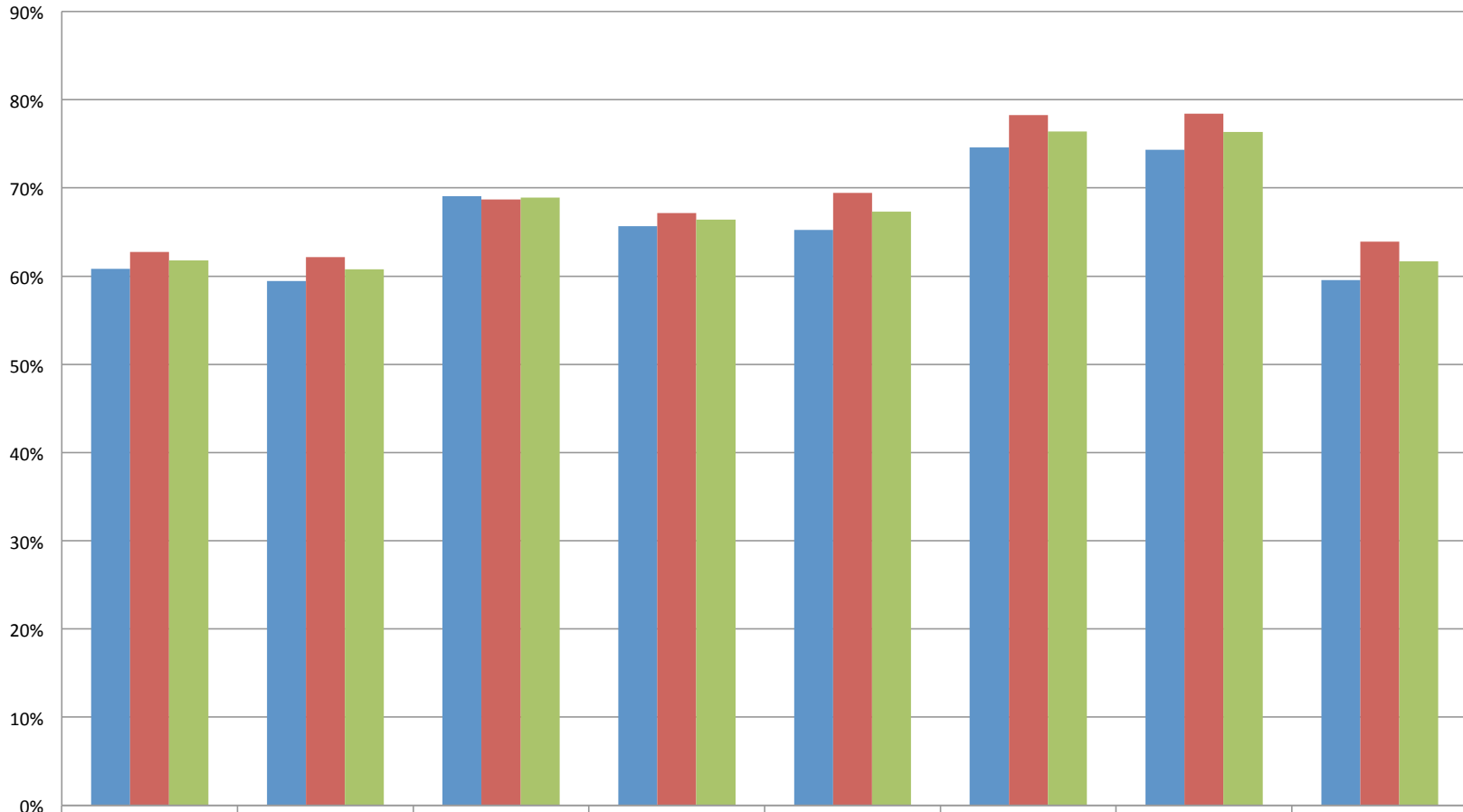


Percentage of Undergraduates Living on Campus



	2007-08	2008-09	2009-10	2010-11	2011-12	2012-13	2013-14	2014-15
Fall	61%	59%	69%	66%	65%	75%	74%	60%
Spring	63%	62%	69%	67%	69%	78%	78%	64%
Average	62%	61%	69%	66%	67%	76%	76%	62%