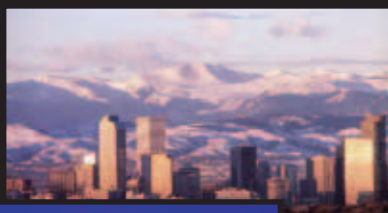




Spring Break at **Pepperdine**

PROJECT SERVE
& PROJECT E(X)



Project Serve

WHAT IS PROJECT SERVE?

Project Serve is an exciting Spring Break opportunity for teams of students to serve and minister in domestic and international locations. It is an adventure designed to help you better understand the needs of our world while challenging your comfort zones. On Project Serve, you will be a member of a team with a unified goal of service for the betterment of the community you visit. In the past, our teams have completed a multitude of meaningful tasks from indigenous tribal ministry in Panama to teaching English at an orphanage in the Dominican Republic to aiding inner-city schools in New York: there is something for everyone. This year's Project Serve includes new and exciting sites as well as sites with which we have a long-standing, positive relationship with. Our goal is to send out students who are ready and excited to serve who will soon realize that the people they serve will change them more than they can ever imagine. No matter what your mission, you will directly impact the lives of hurting people, and you will be an ambassador of hope. You will return tired, but enlivened. Your break will not be a vacation, but a time of astounding, memorable personal growth. It will definitely change you.

WHO CAN BE A PART OF PROJECT SERVE?

Any Pepperdine student who is willing to serve wherever needed qualifies to be a team member. We are looking for people who are ready to be dedicated to Project Serve and who will set out time for team meetings, fundraisers, and team bonding even before the trip begins. Project Serve is an amazing opportunity to grow and volunteer, but it is not a vacation. Also, members must be able to work in diverse teams and willing to meet new people, since we cannot guarantee placement with friends. Finally, members must be flexible and able to adapt to new environments and situations.

HOW CAN I BE A PART OF PROJECT SERVE?

APPLY—Please see below for Team Member application dates.

INTERVIEW—You will be responsible for signing up for an interview when you drop off your application. If you do not do so, your application will not be considered.

ATTEND SITE REVELATION—Wednesday, November 11, 2009 (time and location to be announced).

FUNDRAISE—Trip prices reflect an estimate based on last year's costs. Each member will be responsible for paying the cost of the trip. A finalized cost will be announced at site revelation. Team fundraising opportunities will be available, even if team members choose to pay for the trip themselves.

MEETINGS—Your team leader will conduct your team meetings. Attendance at these meetings is mandatory unless otherwise arranged with your team leader.

WHAT IF I SIGNED UP, BUT CANNOT GO ON THE TRIP?

There will be drop-out deadlines, similar to class add/drop periods. If you cannot go on the trip (regardless of the reason), you will be charged a certain percentage of the cost, depending on the date you drop. Charges will vary because payments will have already been made on the trip.

IMPORTANT DATES

Application Released	October 5
Team Leader Application Due	October 12
Team Leader Interviews	October 12 – 16
Team Member Application Due	October 19
Team Member Interviews	October 19 – 28
Site Revelation	November 11
First Money Deadline	December 4
Second Money Deadline	February 1

ALL APPLICATIONS ARE DUE BY 5 PM TO THE PVC (TCC 230)

Fiji

FIJI KINDE PROJECT: EDUCATION

Location
Vanua Levu Island, Fiji

Fiji Kinde Project introduces early childhood education to remote villages in the outer Fiji islands by initiating and developing kindergarteners. Fiji Kinde Project shares the gospel, trains local teachers, teaches preschoolers, and provides essential educational resources for the classroom. Students will get hands on experience teaching local 4, 5, and 6 year olds in a kindergarten class, along with participating in Teacher-Inservice Training alongside Fijian teachers. We will also bring school supplies to give to the kindergarten classrooms we will serve. This team is open to Education majors and Non-Profit minors. This trip leaves on Thursday, 2/25 at night, and is best suited for students who do not have class on Friday, 2/26. **Project Serve does not support any student missing class for this trip.*



Team Size: 5

MONETARY BREAKDOWN:
 Airline ticket to and from Fiji
 9 days of lodging and meals
 Ground travel in Fiji

Approximate Total \$950

QUICK FACTS

- 1,428 of children do not attend school
- Only 5.6% of Fiji's GDP is spent on education
- There are only 5,107 teachers to reach the needs of 132,722 children in primary school

Fiji

TOOMA'S MEDICAL CLINIC: MEDICAL/ DENTAL

missionatnatuvucreek.com/news.php

Location
Vanua Levu Island, Fiji



Members of the Natuvu Creek community face an array of health and dental needs. Due to poverty and their hard-to-reach location, citizens of this community do not have immediate access to medical or dental care and they are suffering because of it. On this trip, you will assist doctors and dentists in providing basic medical and dental assistance to those who need it most at Tooma's Medical Clinic. In doing so, you will be showing impoverished people love and care that they are not able to receive. This group is open to pre-medical and pre-dental students only. This trip leaves on Thursday, 2/25 at night, and is best suited for students who do not have class on Friday, 2/26. **Project Serve does not support any student missing class for this trip.*

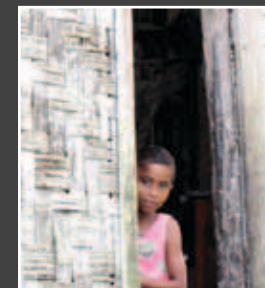
Team Size: 6

MONETARY BREAKDOWN:
 Airline ticket to and from Fiji
 9 days of lodging and meals
 Ground travel in Fiji

Approximate Total \$950

QUICK FACTS

- Over 40% of children are malnourished
- 35% of Fijians live below the poverty line
- Only 47% of the population uses improved drinking water sources



Guatemala

DIMENSIONS MINISTRIES: SUSTAINABILITY/MINISTRY

www.coffeewithjack.com

Location

Huehuetenango, Guatemala



The Community Transformation Project is an intentional demonstration of the love of God to a local community by meeting felt needs in order to meet the eternal need for personal relationship with God. It is designed to impact the entire village by serving four main segments of the community: children, women, men and youth. The children are served with a Vacation Bible School type atmosphere with songs, games, crafts and even refreshments focused on a central Bible story. The women are served by leading them training in personal hygiene, home economics and spiritual values. The youth are served with a special event designed for teenagers where music, drama, and testimonies are presented in a culturally, as well as generationally, relevant manner. The men are served as they are trained to operate and maintain the Safe Water System (SWS). The project will end with a celebration of the gift of safe water to the leaders in the community.

Team Size: 15

MONETARY BREAKDOWN:

Airline ticket to and from Guatemala
7 days of lodging and meals
Ground travel in Guatemala

Approximate Total \$900

QUICK FACTS

- Roughly 35% of rural Guatemalans do not have immediate access to clean water
- 21% of the population lives in extreme poverty
- Chronic malnutrition affects half of all children under 5 years old

Honduras

MISSION PREDISAN: MEDICAL

www.predisan.org

Location

Catacamas, Honduras



The meaning of the word Predisan and the mission of the Predisan organization are one and the same – to preach and to heal. Our students will primarily be working alongside healthcare professionals affiliated with the Predisan Health Center, aiding doctors and nurses in administering shots and taking blood pressure. They will see first hand the challenges doctors continuously face such as lack of supplies, overcrowding, and poor funding. Students will also have the unique opportunity to work with members of the Catacamas community with projects that may include building latrines. From this experience, you will gain an understanding of the deep social justice issues facing this community. All may apply, but preference for this site will be given to Pre-Health/Pre-Med Students.

Team Size: 12

MONETARY BREAKDOWN:

Airline ticket to and from Honduras
7 days of lodging and meals
Ground travel in Honduras

Approximate Total \$900

QUICK FACTS

- Honduras is the third poorest country in the western hemisphere
- About half the population is unemployed or underemployed
- One-half of all children suffer from malnutrition



Dominican Republic

ORPHANAGE OUTREACH: EDUCATION

www.orphanage-outreach.org

Location

Monte Cristi, Dominican Republic



Join Orphanage Outreach in beautiful Monte Cristi. English is a highly sought after skill in the Dominican Republic, and there are not enough teachers to meet the need. Education is the only way out of cycle of poverty for the children that you will be serving. Your team will be living at the Hope of a Child Orphanage and each day you will travel to a nearby school and teach English. This is a great experience for anyone with an interest in working with children, regardless of your major. No Spanish or teaching experience is required.

Team Size: 15

MONETARY BREAKDOWN:

Airline ticket to and from the D.R.

7 days of lodging and meals

Ground travel in the D.R.

Approximate Total \$900

QUICK FACTS

- 45% of rural populations live in poverty
- Has one of the least effective school systems in Latin America
- Only 49% of children enrolled in secondary education

Dominican Republic

ORPHANAGE OUTREACH: MEDICAL

www.orphanage-outreach.org

Location

Monte Cristi, Dominican Republic



Volunteer through Orphanage Outreach to bring public health education and medical services to the worst education system in the Western Hemisphere. Your team will focus on teaching Dominican men, women, and children about nutrition, sanitation, emergency first aid and the effects of substance abuse on the body. You will also have the unique opportunity to help gather basic information like blood pressure, blood sugar and dispense medications to those in need with guidance by healthcare professionals. Pre-medical or pre-dental students and Spanish speakers will receive preference.

Team Size: 15

MONETARY BREAKDOWN:

Airline ticket to and from the D.R.

7 days of lodging and meals

Ground travel in the D.R.

Approximate Total \$900

QUICK FACTS

- 25% of the population lacks access to any healthcare services
- There are 19 physicians for every 10,000 Dominican citizens
- One fourth of women between 15 and 19 years of age have had at least one pregnancy



Panama

YOUTH WITH A MISSION: MINISTRY/AT-RISK YOUTH

www.ywam.org

Location
Panama City, Panama



On this trip students will work alongside Youth with a Mission (YWAM) located just outside the small town of San Vicente, on the outskirts of Panama City. One day you might volunteer at an orphanage or assist a school in one of its drama programs. The main highlight of the week is an overnight trip to an indigenous village. A majority of this service trip is focused on Christian evangelism and ministering to the spiritual needs of the people in Panama City. You will have an opportunity to partake in street evangelism in urban Panama City and learn first hand what missions are like in a foreign country.

Team Size: 12

MONETARY BREAKDOWN:

Airline ticket to and from Panama
7 days of lodging and meals
Ground travel in Panama

Approximate Total \$900

QUICK FACTS

- Only 8% of the population are indigenous
- 95% of indigenous people are in poverty
- 50% of children under 5 in poverty

Camden

URBAN PROMISE: MINISTRY/URBAN RENEWAL

www.urbanpromiseusa.org

Location
Camden, New Jersey



The University Ministry staff is taking this inner-city mission trip to Camden to serve and experience life in one of the most impoverished areas of the country. The team will partner with Urban Promise, a Christ-centered organization that runs youth programs at schools and performs facility and housing repairs. The week will be spent working in the children's ministry and after-school programs and helping out with manual labor. You will also learn about social justice, poverty, the Gospel and Jesus through the UM staff. As a previous volunteer, Vivien De Peralta from the College of William and Mary said, "More happens in the lives of our students in one week with Urban Promise than in the whole year. The transformation and growth is remarkable."

Team Size: up to 20

MONETARY BREAKDOWN:

Airline ticket to and from Camden
7 days of lodging and meals
Ground travel throughout Camden

Approximate Total \$750

QUICK FACTS

- Camden is the poorest city in the US
- Only 30% of public school students graduate from high school
- Urban Promise boasts a 98% graduation rate



San Carlos Apache Reservation

BOYS AND GIRLS CLUB: AT-RISK YOUTH

www.sancarlosapache.com

Location
San Carlos, Arizona



In 1871 the United States army forcibly relocated numerous Apache tribes to San Carlos because of its remote location in a “desolate sand-waste, a sweltering disease-ridden inferno.” Almost 140 years later, the San Carlos Apache Nation still feels the suffering of a post-colonial nation. In virtual isolation, 110 miles east of Phoenix, the San Carlos Apache Reservation bears similar characteristics of many Third World country environments. Alcoholism, domestic violence, and low-education standards contribute to the general lawlessness within this impoverished community. Despite these dire conditions, organizations like the Boys & Girls Club of the San Carlos Apache Nation work tirelessly to provide engaging programs and activities that provide a safe-haven for children on the reservation. Members of this team will participate in after-school tutoring and sports programs with club kids. Additionally, members will have numerous opportunities to learn more about the dynamic history of the Apache and experience the nation’s rich cultural heritage.

Team Size: 10 – 15

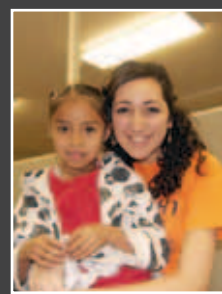
MONETARY BREAKDOWN:

Airline ticket to and from San Carlos
7 days of lodging and meals
Ground travel throughout the reservation

Approximate Total \$350

QUICK FACTS

- 80% of the population on the reservation lives under the poverty line
- Approximately 2,400 families on the reservation live in sub-standard or inadequate housing
- 65% of the Reservation population is unemployed



New York City

SHILOH MINISTRIES: EDUCATION

www.shilohnyc.org

Location
New York City, New York



Your team will travel to New York City and work with Shiloh Ministries at one of three partnering public schools in the South Bronx where you will tutor children who need a little extra push to be ready for city and state tests. You will work one-on-one with a few children during the morning classes and then return to their classroom in the afternoon to observe and assist in the classroom. Not only are you impacting the students, you also provide much needed support and encouragement to the teachers who are often overworked, under paid and under appreciated. Lodging is taken care of through Shiloh’s partnership with the Manhattan Church of Christ.

Team Size: up to 15

MONETARY BREAKDOWN:

Airline ticket to and from New York City
7 days of lodging and meals
Ground travel throughout New York City

Approximate Total \$650

QUICK FACTS

- 28% of Bronx population is in poverty
- 1 in 3 children under 5 live in poverty
- 60% of elementary and middle school students read below grade level



Seattle

UNION GOSPEL MISSION: HOMELESSNESS

www.ugm.org

Location
Seattle, Washington



Your team will be working through Union Gospel Mission to help low income residents of Seattle. In the morning, your group will work with a homeless shelter serving meals and helping around the church. In the afternoon, you will work at a youth center and assist after school programs for elementary school children by playing games with them and helping with homework. Your team will also get the opportunity to explore downtown Seattle's international quarter, which is home to the many cultural groups that make the city so unique.

Team Size: 12

MONETARY BREAKDOWN:

Airline ticket to and from Seattle
7 days of lodging and meals
Ground travel throughout Seattle

Approximate Total \$450

QUICK FACTS

- Of the individuals served by food banks, 25 percent are families with children
- 11.8% of the population is living under the poverty line
- There are an estimated 5,664 homeless people accessing shelters and transitional programs

Chicago

FIRST CHURCH OF THE BRETHREN: HOMELESSNESS/ URBAN RENEWAL

www.firstcob.org

Location
Chicago, Illinois



You will work with the DOOR network, a faith-based network of six cities that provides opportunities for service, learning and leadership development within the urban context. In Chicago you will be based at the First Church of the Brethren where you will partner up with another college group, dedicating a whole week of different service projects every day. On some days we would travel downtown to serve hot meals at several homeless shelters, work at a food pantry to sort and organize materials, or paint and clean elementary schools. The projects vary according to the needs of the organizations you serve.

Team Size: 12 – 20

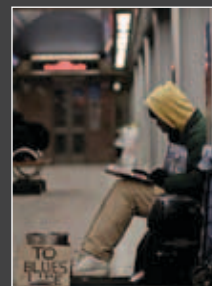
MONETARY BREAKDOWN:

Airline ticket to and from Chicago
7 days of lodging and meals
Ground travel throughout Chicago

Approximate Total \$650

QUICK FACTS

- 28% of children are living in poverty in Chicago
- There are an estimated 135,000 homeless living in the city
- 19.6% of the population is living under the poverty line



Waco

MISSION WACO: URBAN RENEWAL/MINISTRY

www.missionwaco.org

Location
Waco, Texas

You will work with low income families in conjunction with the Church Under the Bridge, a community praised by Shane Claiborne in his bestseller, The Irresistible Revolution. You will assist in much needed urban renewal projects such as: painting, organizing and cleaning in neighborhood projects through the Church. You will also host Street Camp, a Bible camp for children, where you can script parable plays and engage them in the Word of Christ. The team's last two days will be spent working with the World Hunger Relief Farm. You will learn about the steps being taken to eliminate hunger around the globe.



Team Size: 10 – 15

MONETARY BREAKDOWN:

Airline ticket to and from Waco
7 days of lodging and meals
Ground travel throughout Waco

Approximate Total \$615

QUICK FACTS

- 27.6% of the population lives under the poverty line
- More than one in three children live in poverty
- Approximately half of the homes in Waco are worth less than \$50,000

Oakland

HARBOR HOUSE MINISTRIES: EDUCATION/AT-RISK YOUTH

www.hhministries.org

Location
Oakland, California

Your team will be working with Harbor House Ministries, which has served more than 100,000 people in spiritual, economic and educational development over the past thirty five years. During the day your team will have the opportunity to participate in programs such as: teaching ESL classes, stocking their emergency food/services program, managing their church-owned thrift store and various work projects. In the afternoon your team will work one-on-one with children in grades K-12 — opportunities include children's games, athletics and academic tutoring.



Team Size: 10 – 15

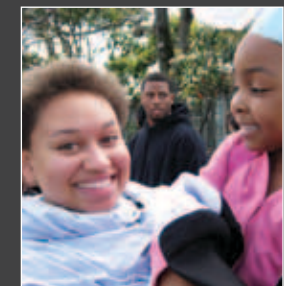
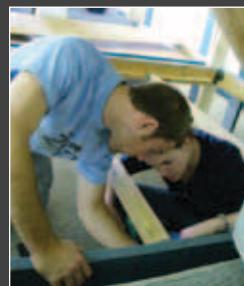
MONETARY BREAKDOWN:

Airline ticket to and from Oakland
7 days of lodging and meals
Ground travel throughout Oakland

Approximate Total \$500

QUICK FACTS

- Over 150 different languages are spoken in the city of Oakland
- The average Harbor House participant family works 2 to 3 jobs to make ends meet
- 19.4% of the population lives under the poverty line



Las Vegas

LAS VEGAS RESCUE MISSION

www.vegasrescue.org

THREE SQUARE FOOD BANK

www.threesquare.org

WEST COAST CONFERENCE BASKETBALL TOURNAMENT

Location

Las Vegas, Nevada

Lift the spirit of the homeless in Las Vegas AND show your Pepperdine spirit all in the same week! Pepperdine students participating in this trip will travel to Las Vegas, Nevada and volunteer at the Las Vegas Rescue Mission and Three Square Food Bank from Tuesday, March 2nd thru Thursday, March 3. Participants will then stay and cheer on the Waves men's and women's basketball teams for each game of the 2010 West Coast Conference Basketball Tournament (Friday, March 4 – Monday, March 6) in which they participate. If Pepperdine makes the championship game, all participants will stay in Las Vegas until Monday, March 6. The earliest day Pepperdine students will be able to return to Pepperdine will be on Saturday, March 5.

Team Size: up to 50

QUICK FACTS

- Out of the over 300,000 students in the Clark County School District, 45.5% (who completed paperwork) receive "Free and Reduced Meals." In other words more than 140,000 school children are at risk of being hungry.
- 454,235 Clark County children under the age of 18 live below the poverty line
- 180,854 Clark County residents over the age of 65 live below the poverty line
- In 2007, there were approximately 100,000 families were living at or below the poverty line



MONETARY BREAKDOWN:

Lodging for the duration of the trip

Bus transportation to, from, and around Las Vegas

Meals during the volunteer days.

NOTE: The cost does not include meals during the WCC Basketball Tournament (starting at dinner on Thursday, March 4th). Participants will be responsible for their own funding for the duration of Pepperdine's tournament success. During the trip, Pepperdine will coordinate transportation for those Pepperdine students who wish to tour Las Vegas.

Minimum Cost \$280

Maximum Cost \$425

Participants in this project will pay Pepperdine Athletics \$425 for the trip. If Pepperdine does not make the championship game on Monday, March 6th, Pepperdine Athletics will refund each participant the amount paid over the actual costs.

Costa Rica

APPLESEED EXPEDITIONS: ENVIRONMENTAL/ EDUCATION

www.appleseedexpeditions.com

Location

La Carpio, Costa Rica

On this trip, you will be involved in aiding the Nicaraguan refugee town of La Carpio and an orphanage in the town of Fortuna. You will be engaged in a variety of meaningful service activities such as: helping with the local medical clinic, installing water filtration units, and mentoring the impoverished children during after school tutoring programs. Students will also have the opportunity to hike through rainforests, visit active volcanoes, and learn about the fragile ecosystem. At the end of the trip, you will also participate in light construction work and teach English to the local youth. Every task given to you is an opportunity to aid this community in need.

Team Size: 15

MONETARY BREAKDOWN:

Airline ticket to and from Costa Rica

7 days of lodging and meals

Ground travel in Costa Rica

Approximate Total \$900

QUICK FACTS

- 70,000-100,000 inhabitants live on one square mile in La Carpio
- Over 50% of the population is below the poverty line
- 75% of Costa Rica's forests are now destroyed



Project e(X)

EXPERIENCE, EXPOSURE, EXTERNSHIP

WHAT IS PROJECT e(X): EXPERIENCE, EXPOSURE, EXTERNSHIP?

Project e(X) is an externship during Spring Break that provides students with two to three days of job shadowing experience and exposure at a Pepperdine alum's workplace. The Seaver College Career Center will match your industry and city of interest with an alum that is best suited for you. As an extern, you will get a glimpse of the real world and have a chance to learn what skills are necessary to be successful in a particular industry. You might have the chance to attend meetings and presentations, meet staff members, and most importantly, you will be able to network with professionals in your field of interest.

WHO CAN PARTICIPATE IN PROJECT e(X)?

Project e(X) is designed for juniors, but sophomores and seniors are welcomed to apply. We are looking for students who are able to carry themselves professionally, willing to learn, network, and take initiative.

WILL I GET PAID DURING MY TIME AT THE COMPANY?

No, this is an opportunity for you to learn more about a career you are interested in through a Pepperdine alum.

HOW MUCH DOES THIS TRIP COST?

Travel, housing, and food expenses are your responsibility; the employer and Pepperdine University will not provide any compensation for this trip.

WHAT DO I WEAR TO THE EXTERNSHIP?

Appropriate professional attire is required.

HOW CAN I BE A PART OF PROJECT e(X)?

APPLY—Submit your application to the Seaver College Career Center (TCC 210) by Monday, October 19 at 5 PM.

INTERVIEW—Schedule an interview for the days of October 23 – 30, 2009 by e-mailing Lilia.Chang@pepperdine.edu of your three available days and times.

ATTEND ORIENTATION—Wednesday, February 17, 2010 in TCC 260 (*time will be announced*).

BE AN EXTERN—two to three days during the week of March 1 – 5, 2010.

SAN FRANCISCO, CALIFORNIA

Airport: San Francisco International Airport (SFO)

San Francisco truly can call itself a melting pot, with varied neighborhoods cohesively joined together. There are rows of beautiful houses, famous cable cars, ethnic neighborhoods, and an amazing waterfront. Nearly half of its residents are foreign born or have a foreign born parent making San Francisco an extremely international city. In addition to all its charm, San Francisco is a major financial and insurance center, an international port and a gateway to super high tech Silicon Valley. Major industries include shipping, trade, banking, high tech, defense, aerospace, medical science and of course, tourism.



LOS ANGELES, CALIFORNIA

Airport: Los Angeles International Airport (LAX)

Los Angeles is a place for everyone, from those who look for the extremely urban environment of downtown, to the glitz and glamour of Hollywood, all the way to the beautiful beaches of Malibu. There are people from around the world including one of the largest Hispanic populations of any city in the United States and a significant Asian community. Los Angeles is constantly on the cutting edge of entertainment and technology, often receiving innovation before the rest of the country. It is the largest manufacturing center in the United States, enjoys tons of international trade and is a definite financial and banking center. Additionally, there are opportunities abound in the entertainment industry, the service industry, and many more.



SAN DIEGO, CALIFORNIA

Airport: San Diego International Airport (SAN)

Described by its residents as “America’s Finest City,” San Diego enjoys incredible weather all year, beautiful beaches and numerous entertainment venues. The people come from a variety of backgrounds but come to enjoy an active lifestyle in the sun. With its proximity to Mexico, San Diego feels extremely international with a great mix of culture and backgrounds.



Economically, main industries include agriculture, defense, high technology, biotechnology, international trade, manufacturing, and tourism. San Diego is known for its huge military presence and takes great pride in being home to thousands of men and women serving in the armed forces.

LAS VEGAS, NEVADA

Airport: McCarran International Airport (LAS)

Extremely unique amongst US cities, Las Vegas is famous for the glitz and glamour of the “Strip.” Casinos, world-class entertainment, and pure decadence instantly come to mind with Las Vegas. However, it is also becoming a center for business and finance. Tourism remains huge as Las Vegas is a true entertainment capital, but service industries amongst more traditional finance industries are growing. Residents of Las Vegas will more often pass on the legalized gaming, and head to a diverse range of cultural and recreational opportunities surrounding the city.



DENVER, COLORADO

Airport: Denver International Airport (DEN)

Just step outside. Metro Denver offers a panoramic view of the Rocky Mountains, the nation’s largest public park system, and 300 days of sunshine a year. As a result of these and other amenities, the metro area consistently tops the lists of most livable cities. When the citizens of Denver are not outdoors, they enjoy the sports teams and cultural attractions such the Denver Performing Arts Complex, the largest such facility under one roof outside of New York City. The major industries in Denver include air transportation, telecommunications, aerospace, manufacturing, energy research, and banking. In addition, it is a regional headquarter for many government agencies.



DALLAS, TEXAS

Airport: Dallas-Fort Worth International Airport (DFW)

Located in the heart of the Lone Star state, Dallas boasts a number of fortune 500 companies and produces one third of all goods and services in Texas. With Fort Worth nearby, this region truly is the economic capital of Texas. Focused on service, finance, insurance, real estate and manufacturing industries, there are a number of opportunities in Dallas. With a young and diverse population including over a million foreign born residents, Dallas is becoming more and more an international city. Residents of the area enjoy a plethora of museums and the nearby sports teams, notably the Cowboys, Rangers and Mavericks.

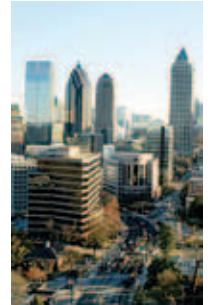


going for it—climate, location, great transportation, easy air access, and a government that’s both cooperative and supportive.” This is a judgment widely shared by both residents and visitors.

MIAMI, FLORIDA

Airport: Miami International Airport (MIA)

Described as the “only great city of the world that started as a fantasy,” Miami is home to a subtropical climate, a naturally protected harbor and spectacular beaches. Although traditionally viewed as a place for tourists and retirees since the late 1980’s Miami has seen incredible economic growth, transforming itself into a leader in international finance and commerce. Residents of the area enjoy the diverse population in more ways than one including the amazing Latin American and Haitian art throughout the city.



CHICAGO, ILLINOIS

Airport: O’Hare International (ORD)

Located in the heartland of America, Chicago is a blend of old history and modern innovation. With renowned architecture, including some of the world’s first skyscrapers, world-class museums, great sports teams, parks, and many more cultural experiences, the residents of Chicago enjoy world-class entertainment. The diversified economy is based on manufacturing, printing, publishing, finance, insurance and food processing (the city is still considered the nation’s “candy capital”). Transportation is a breeze with one of the nation’s finest public transportation systems including extensive mass transit.



WASHINGTON, D.C.

Airport: Dulles International Airport (IAD)

The nation’s capital, known for its history, national monuments, and heated political battles is also home to great economic activity. While many people enjoy employment from the federal government, the city also boasts huge numbers of political activists and journalists along with numerous other industries. With people from around the world, the nation’s capital is also an international city. Monuments that dominate the skyline remind visitors of the resolve and sacrifice it took to form this great nation.



ATLANTA, GEORGIA

Airport: Hartsfield-Jackson Atlanta International Airport (ATL)

Georgia’s capital and largest city, Atlanta, is a major southern financial and cultural force. People from around the country and world have sought Atlanta’s mild climate, physical beauty and job opportunities. Atlanta holds a major position in national and international commerce with 24 Fortune 1000 companies. Major industries include service, trade and manufacturing. Ted Turner, one of the city’s well-known citizens, has declared that Atlanta has “absolutely everything



NEW YORK CITY, NEW YORK

Airport: John F. Kennedy International Airport (JFK)

The Big Apple, home to the Statue of Liberty, the Empire State Building, the United Nations and numerous other landmarks is truly a place of its own. With over 8 million people within 321 square miles, representing over 180 countries, New York City is truly cosmopolitan in every way. If New York City were a nation, it would have the 17th highest GDP! These incredible numbers come from the booming international finance dealings, services, media, entertainment, manufacturing and trade industries. Recently, high tech industries have become growingly important and tourism remains essential as always. After all that hard work, residents enjoy world-class museums, galleries and performance venues unrivaled in the Western Hemisphere.



BOSTON, MASSACHUSETTS

Airport: Boston-Logan International Airport (BOS)

A unique mix of historic culture and modern change, Boston has a vibrant and diverse business sector, prestigious universities, amazing hospitals, world-renowned museums, and close proximity to the famous beaches at Cape Cod. Nearly everything in the city is accessible by the nation's oldest transit system, the "T." Major industries include finance, high technology research, tourism, medicine, education, printing, publishing and government. Residents enjoy 62 historic sites, nearly 2000 restaurants, and bring guests to their hundreds of hotels.



PEPPERDINE UNIVERSITY

Seaver College